

Dear participants of the  
International Transport Forum 2022,

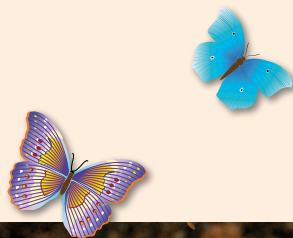
I am extremely happy to welcome you back in person  
to Leipzig!

During the last 2 year we could not meet here due to  
the pandemic, and our bike tour as a traditional and  
special last highlight of every International Transport  
Forum took place only virtually.

It is a great pleasure to invite you to join me on a  
unique excursion to experience the very special atmos-  
phere of our green and livable city – on a route besides  
the official touristic offers. We will discover some of our  
new investments in bike infrastructure on river and  
canal banks, different highlights of the industrial herit-  
age and their modern use as well as a variety of leisure  
activities in community spaces created by citizens. For  
a short break we will make a picnic in a formerly train  
station area and enjoy some cold drinks and sweets.

I hope you will join me on this ride!

Burkhard Jung  
Mayor of Leipzig



#### Contact:

City of Leipzig

Mayor's Office

Office for International Affairs

Dr. Heiderose Heßke, Deputy Head of Office

Address: Martin-Luther-Ring 4–6, D-04109 Leipzig

phone: +49 172 7750556

E-Mail: [heiderose.hesske@leipzig.de](mailto:heiderose.hesske@leipzig.de)

Internet: <http://www.leipzig.de>

Photos: Stadt Leipzig, Amt für Geoinformation  
und Bodenordnung 2022 (Karte), Pixabay  
Stephan OKOLO Fromme, Wikipedia, Caisare



#### Practical information:

Start/End of the tour:

13:30 Congress Center, Transfer by Bus

14:00 Neues Rathaus, Martin-Luther-Ring

16:00 Neues Rathaus

All bags and belongings you don't need during  
the tour can be stored in the transfer busses.



## Leipzig by bike 2022

### Discovering the unknown urban life

on tour with Mayor Burkhard Jung





## Tour stations

- 1 Federal Administrative Court:** The building of the Federal Administrative Court was constructed in 1895. Until 1945 it was used as the premises of the Imperial Court of Justice. Partially destroyed during the World War II and rebuilt in 1952, it has been used over the years by various institutions. Today it is the seat of the Federal Administrative Court.
- 2 University quarter:** The quarter is directly located in the city. Here, institutions like the University of Music and Theatre, the Academy of Fine Arts, and the University for Applied Sciences can be easily reached by thousands of students– as well as the big complexes of our main Leipzig University.
- 3 Sachsenbrücke:** Due to its relaxed atmosphere, daily live music and coffee and ice cream vendors, the bridge of Saxony a symbol of the high quality of life in Leipzig. It is now colorated by the civil engaged community with "Warming stripes" to visualize the heating of our planet.
- 4 Könnerritzbrücke/ Buntgarnwerke:** One of the largest industrial monuments in Germany are the Buntgarnwerke formerly used for the production of wool yarn. After the decline of the industrial heart of the city after 1990, this area was transformed into a residential complex with styling lofts. The formerly polluted river and canals are now a wonderful recreation area used by so many families and tourists with their small boats.
- 5 Karl Heine Canal:** The extensively used cycle path on the canal bank was constructed in connection with its fundamental upgrading and cleaning. The path is almost entirely green with recreational and adventure spaces. For the future, the extension of the canal will be planned to go by boat directly from Leipzig to the river Elbe and the Northern Sea.
- 6 Niemeyer Sphere/Baumwollspinnerei:** The Niemeyer Sphere is a modernist architectural element in the form of a sphere with a shell of concrete and glass, which is attached to the upper edge of a brick industrial building – the last realised design by the Brazilian architect Oscar Niemeyer (1907–2012).  
It is located at a former industrial complex nearby the Baumwollspinnerei, home of artists, galleries, craft workers, designers, small shops and other creative minds. Twice a year, thousands of visitors are discovering the brand new exhibitions of contemporary art.
- 7 Bürgerbahnhof Plagwitz:** This formerly train loading station was transformed into a community space where you can test a variety of activities like urban gardening, soccer or climbing possibilities. We will enjoy this special location for a short break with cold drinks and some sweets before returning to the City center.

